

1 Check contents

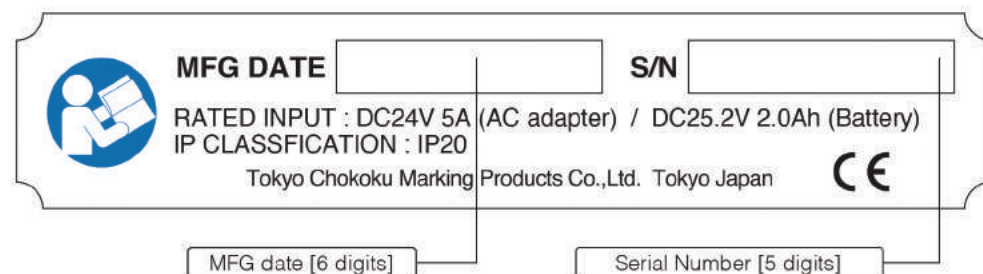
● Contents in package



- 1 Patmark or Patmark-mini unit
 - 2 AC/DC Adapter and Power Code
 - 3 Centering Tool (Only for Patmark-mini)
 - 4 USB cable
 - 5 Battery Pack and Charger (Only for BA model)
 - 6 Carry case (Only for Patmark-mini)
 - 7 Spacer (Only for Patmark-mini)
- * Optional carry case for Patmark is available
- * Note : See the attached "Instructions for Deeper Marking Applications" for the spacer usage.

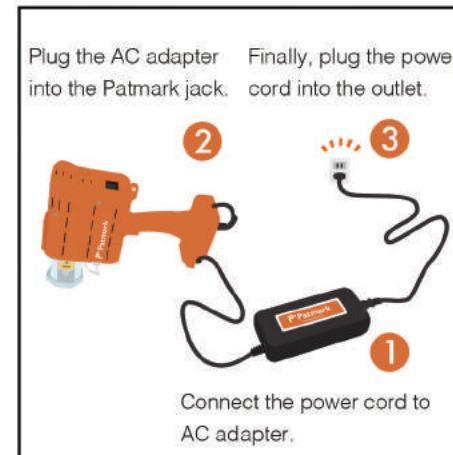
● Indication on the nameplate

The serial number that is indicated on the nameplate will be shown as WiFi SSID, when the Patmark is turned ON. *e.g. Patmark12345



2 Prepare for marking

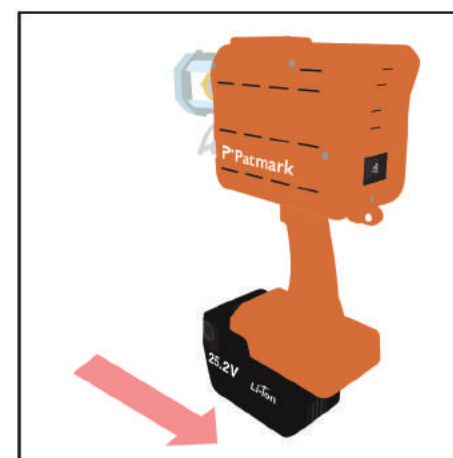
● Using the AC/DC adapter



CHECK ! Follow the proper connection sequence. Not following the correct sequence could create a static charge in the DC output plug of the AC adapter, potentially resulting in an electric shock or minor injury. Also, make sure the adapter's plug does not touch metal parts other than the Patmark power connector.

CHECK ! Be sure to install the included protection cover on the Patmark terminal before using. Not following these steps could result in a short circuit.

● Using the Battery



For battery installation, slide the battery all the way in until it makes a clicking sound.
For battery removal, slide the battery out in the opposite direction while holding down the battery removal buttons.

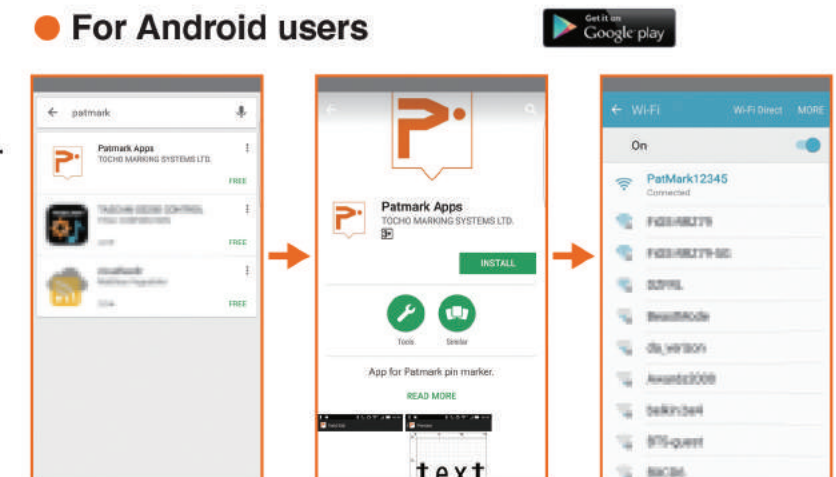
CHECK ! Charge the battery fully before use.

3 Install Patmark app

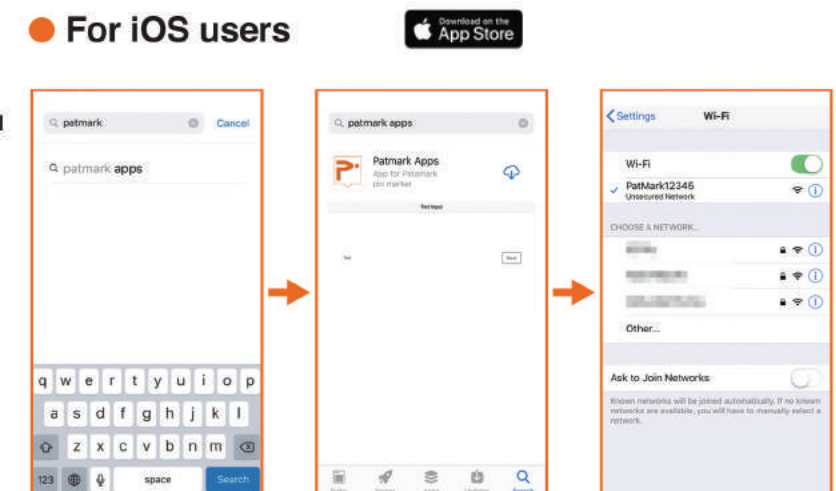
3 steps to download Patmark app

- 1 Download and install the latest Patmark app.
- 2 Power on the Patmark unit.
- 3 Open the WiFi settings on your device then search the SSID of the Patmark and connect.

● For Android users



● For iOS users



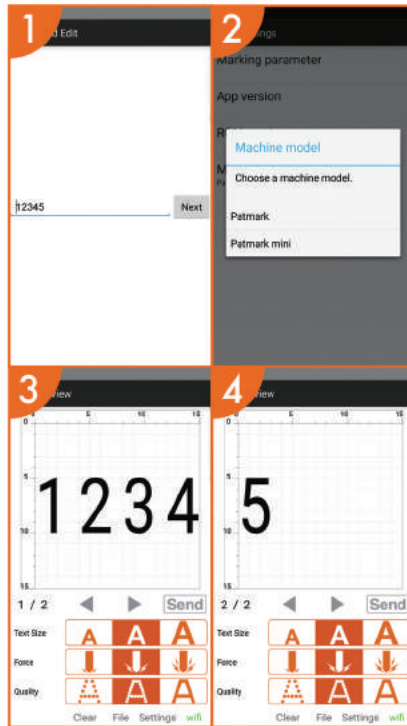
Quick Startup Guide

Please read through the Startup Guide instructions carefully in advance.

Before starting: Please read all sections regarding "Safety Information" in the "Startup Guide". Not following the instructions could lead to accidents and/or damages.

4 Start operation

* Screenshots using Android device



- 1 Verify the "WiFi" symbol turns green(Connected). If the "WiFi" symbol is grey, click on it to reconnect.
- 2 Choose a machine model.
- 3 Enter the text and click on the "Next" button. Alphanumeric characters and various symbols are accepted.
- 4 Select the settings of the font size, marking force, and quality(resolution). Then click the "Send" button.

CHECK ! If the data is longer than the marking area, press the left and right arrows to view the entire data.

CHECK ! Pressing the "Clear" button will delete the data on the preview screen

* See the "Startup Guide" for more details or iOS operation.

5 Start marking



As shown in the figure, **make sure to hold Patmark using both hands.** Then, click the Start/Stop trigger button once and let go of the button. During the marking process, tightly hold onto the Patmark with both hands.



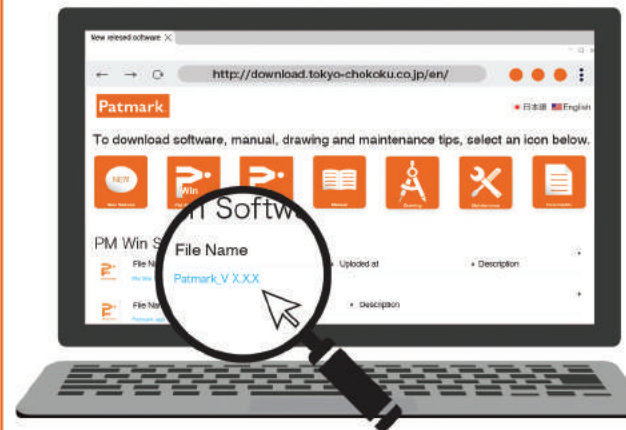
Watch our "Programming Tips" videos in the "Support" section on our website, <https://www.tocho-america.com/support/>

How to install PM Win Software

* For Windows 7 or higher

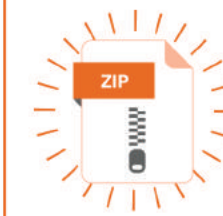
- 1 Download the latest PM Win Software using the website below.
 - *Choose "Install" if security software detects.
 - *Registration is required on first log-in.

<http://download.tokyo-chokoku.co.jp/en/>

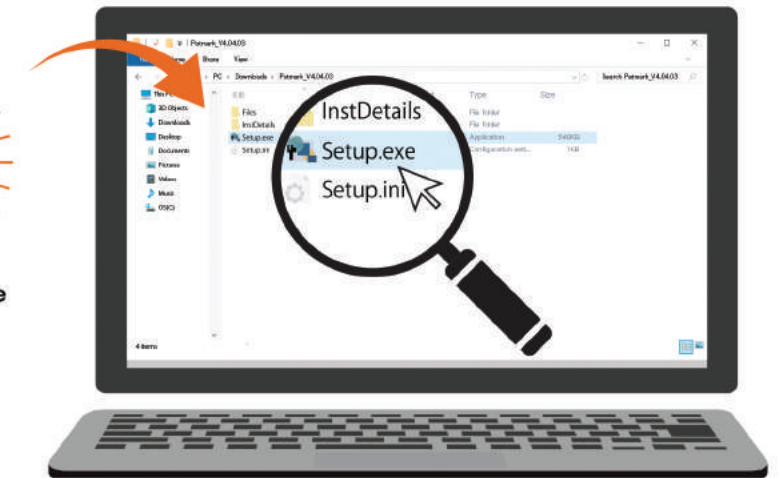


CHECK ! Choose the 'Save' or 'Save as' if you are asked in the 'File Download'.

- 2 Extract the zip file after downloading is completed. Then click the Setup.exe to start installation. *If security warning pops up during installation, continue with the "Run" option from the details button.



Extracting ZIP file is necessary.



- 3 Open PM Win Software, then enter default password "0000". Under communication method, choose either "USB" or "WiFi". Your selection will be highlighted in Orange.

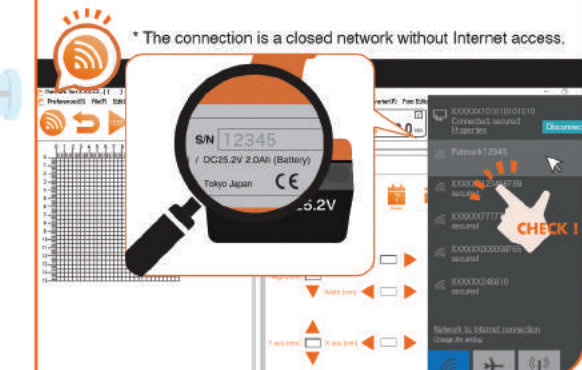


- 4
 - **USB connection**
 - Click the "Install USB Driver" button [*1] if your PC doesn't allow the auto installation, then click "USB" icon [*3] to connect. If still unable to connect, see the "View Installation Manual USB Driver" button [*2].



- **WiFi Connection**

Power on the Patmark unit. Find the Patmark SSID in the WiFi Setting on your computer, then connect. Under communication in PM Win Software, click the "WiFi" icon [*3] to connect.



* The connection is a closed network without Internet access.

Contact information for support



MB Metal Technologies, LLC
403 S. Hawley Road
Milwaukee, WI 53214

P: 855-897-1439
www.MarkinBOX.com
www.mbmataltech.com