



NEVER TRACKLESS

permanent mark with electric pinmarker

DEEP
MARK

 MarkinBOX®

Compact Sized Portable Marker MB3315S

*Actual size



Available in 5 colors.



Red



Silver



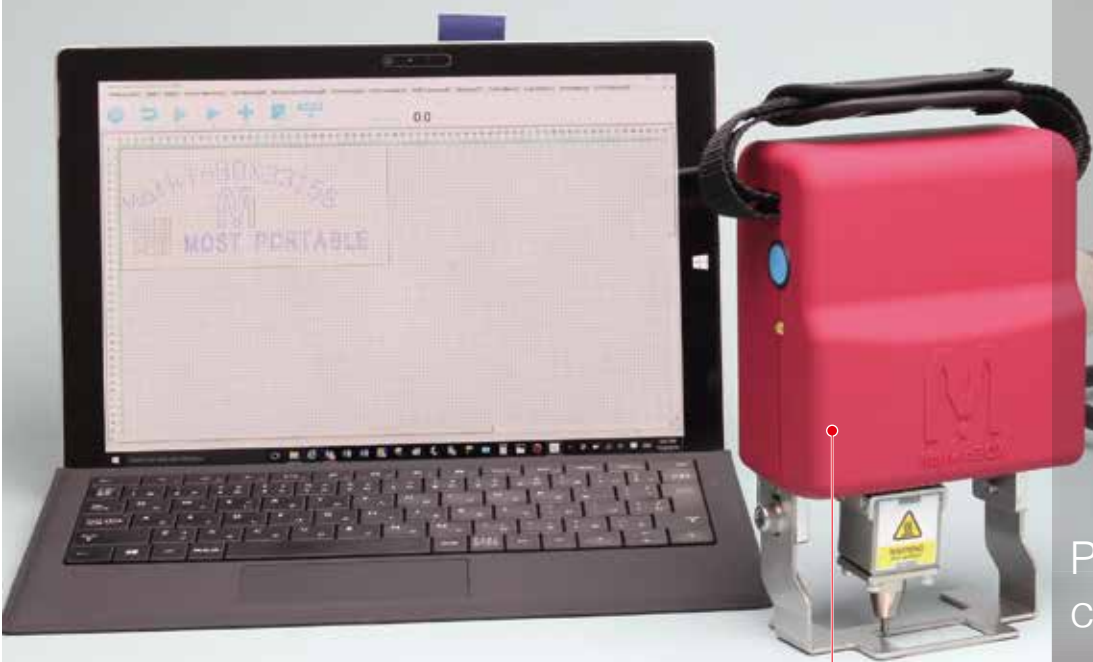
Blue



Green



Black



Made of impact-resistant polycarbonate finished with a rubber coating.

Portability-focused compact marker.

Marking area of
X axis 33mm x Y axis 15mm.



Easy marking at any place
due to the lightweight
1.5 kg (3.3lbs) only.



Shutter to keep
debris out is
standard feature.



A metal cover is
provided as
an option.

Workpiece Samples



Hardened steel (HRC62)



Metal casting

Middle Sized Portable Marker MB8020S

*Actual size

Available in 5 colors



Red



Silver



Blue



Green



Black



Made of impact-resistant polycarbonate finished with a rubber coating.

Mid-sized marker combining portability with a long horizontal marking area.

Marking area of
X axis 80mm x Y axis 20mm.



Tool and post model (option).



Big Solenoid (BSD) for deeper marking is an option.



A metal cover is provided as an option.

Workpiece Samples



Plated mild steel



Round stainless steel

Larger Sized
Tool Post Marker
MB1010



Available in 5 colors



■ Champagne Gold



■ Wine Red



■ Silver



■ Gun Metal

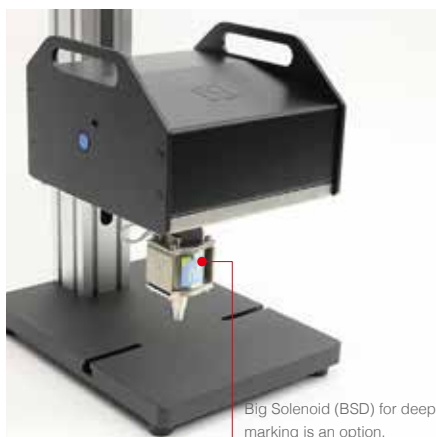


■ Black



Larger marking area
more diverse needs.

Marking area of
X axis 100mm x Y axis 100mm.



Big Solenoid (BSD) for deeper marking is an option.



Shutter to keep debris out is standard feature.



Portable model (option).

Workpiece Samples



Hardened steel (HRC62)



Metal plates

Greater Sized Tool Post Marker MB2015

Available in 5 colors



Champagne Gold



Wine Red



Silver



Gun Metal



Black

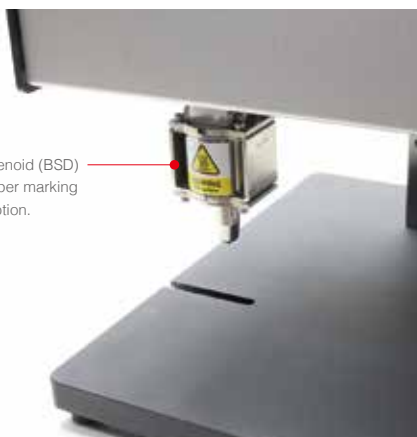


The largest model
in MarkinBOX series.

Marking area of
X axis 200mm × Y axis 150mm.



Big Solenoid (BSD)
for deeper marking
is an option.



Shutter to keep debris out is
standard feature.



Portable model (option)
Total weight 8.5kg (18.7lbs)



Workpiece
Samples



Arc marking on
the cover of drum can



Longitudinal marking

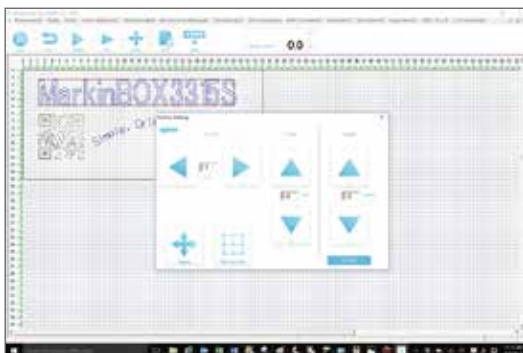
sketchbook2 Software

Intuitive easy to use
WYSIWYG operation

One-touch icon-based
drawing.
Support for PC fonts.

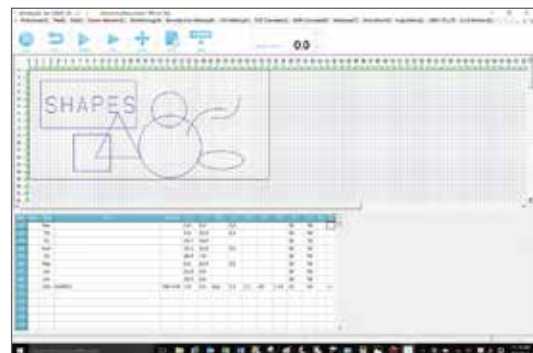
Automatic conversion of
DXF data.
No tracing is required.

CSV data can be imported.
Excel and other csv data
can be easily marked.

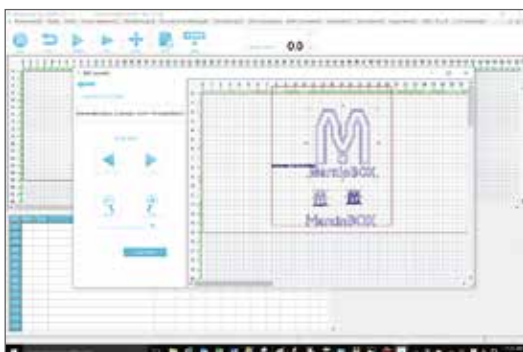


Sense of free drawing on paper and intuitive operation using icons;
PC fonts also can be marked as they are.

*PC fonts are supported only when a PC is connected.

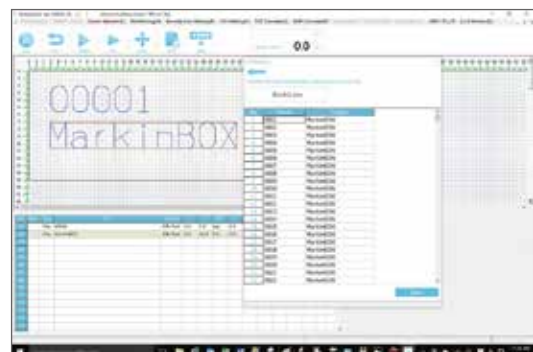


Rectangles, circles, straight lines, ellipses, triangles and other figures can
be drawn using shape icons; thus simple markings can be easily created
and marked.



Automatic conversion of DXF data is standard included; input data can be
automatically converted into MarkinBOX marking data.

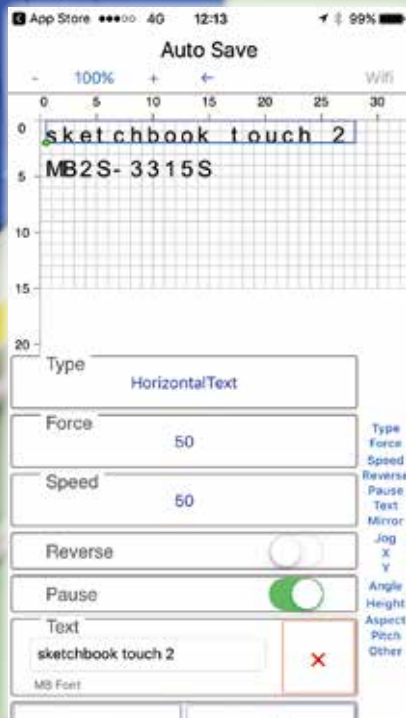
* Straight lines, circles, ellipses and polygons are supported;
splines and letters are not supported.



CSV marking is included as a standard;
Excel (CSV format) and other databases can be retrieved with
one click.

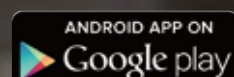
Accessories

MarkinBOX with
easy to use
WIFI communication



*There is a uncomfortable WIFI communication case depend on the using environment.

Operation with ease
iPhone, iPad and
Android



*There is a uncomfortable WIFI communication case depend on the using environment.

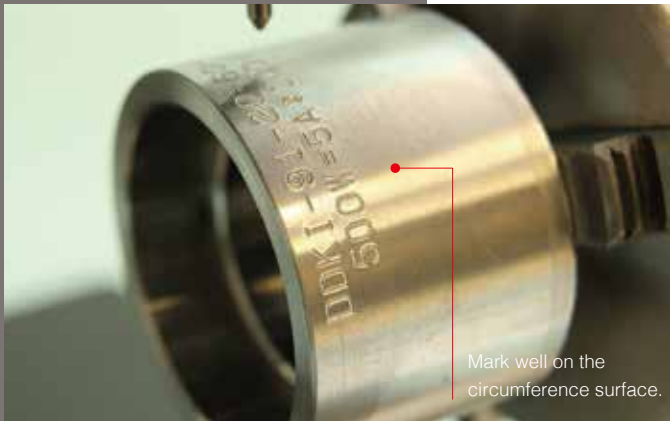
Rotary Device

Auto rotation MB Chuck Rotary

A supporter is provided as an option.

Available with all MarkinBOX series.

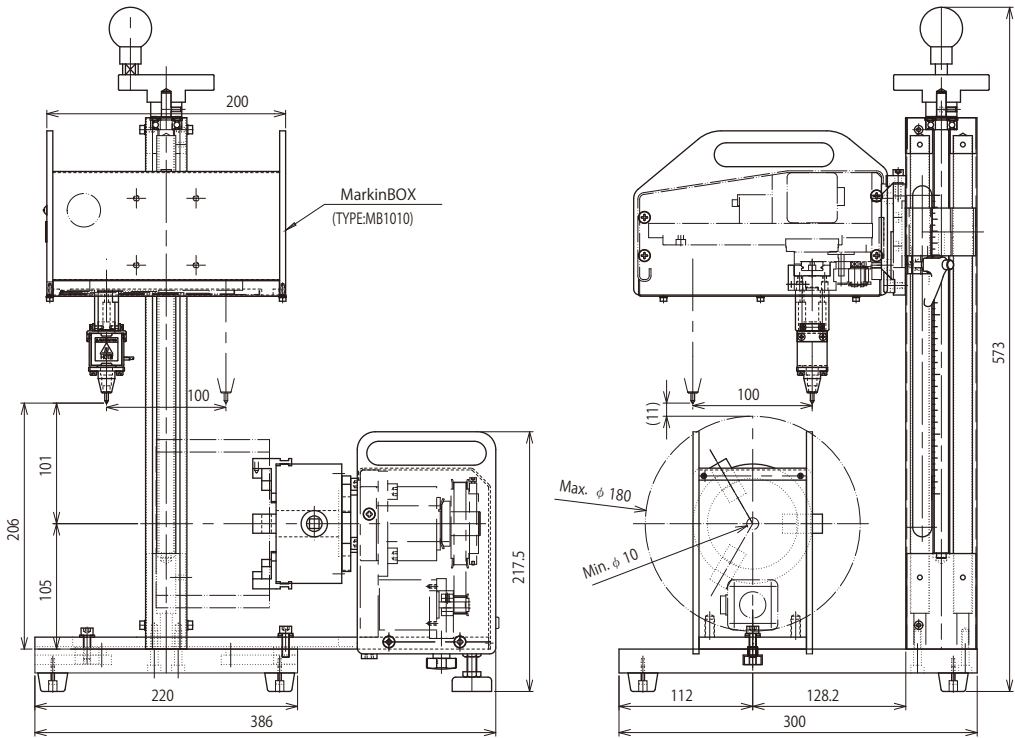
MB Chuck Rotary



MB Chuck Rotary Specifications

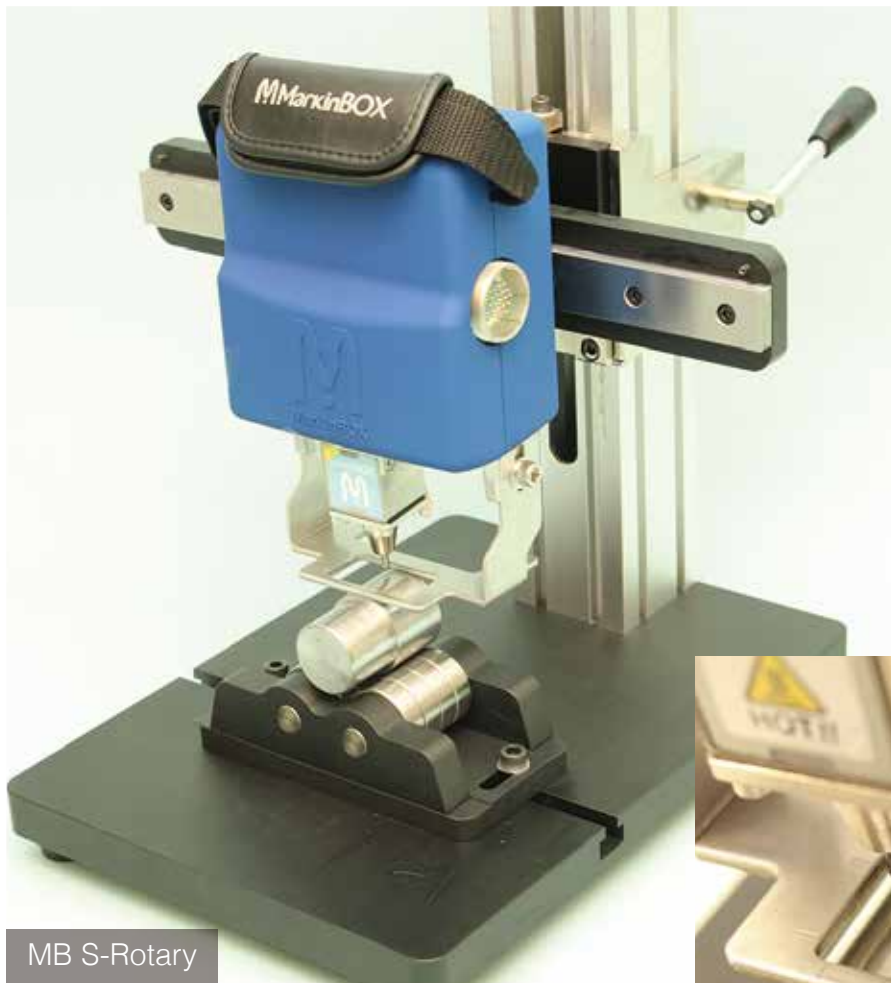
Chuck specification	Chuck type	Grasping method	Work size	Grasp weight
Standard (φ80)	External jaws	Inside diameter grasp (pipe)	φ25~φ70mm (1" ~ 2.7")	Approx. 6kg (13.2lbs)
		Outside diameter grasp	φ10 ~ φ25mm (0.4" ~ 0.9")	
	Internal jaws	Outside diameter grasp	φ22 ~ φ63mm (0.9" ~ 2.4")	
Large (option) (φ100)	External jaws	Inside diameter grasp (pipe)	φ30 ~ φ90mm (1.2" ~ 3.5")	
		Outside diameter grasp	φ10 ~ φ30mm (0.4" ~ 1.1")	
	Internal jaws	Outside diameter grasp	φ30 ~ φ80mm (1.2" ~ 3.1")	
External dimensions / Weight		100(W)×196(D)×218(H) ／ 4.1kg (9lbs)		

MB Chuck Rotary Overview

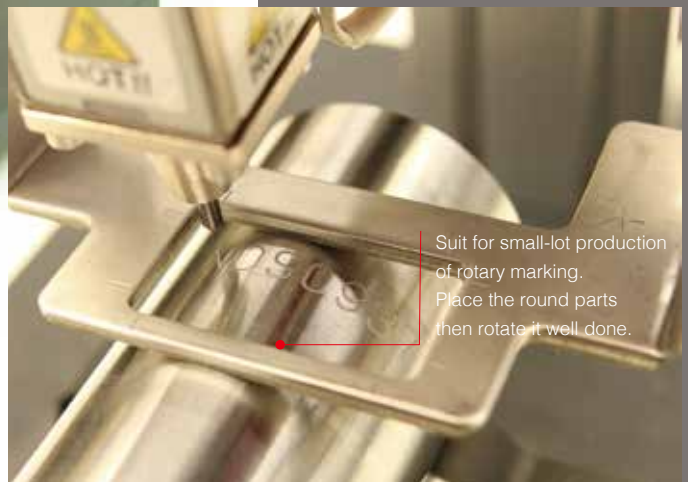


Rotary Device

Manual rotation S-Rotary



MB S-Rotary

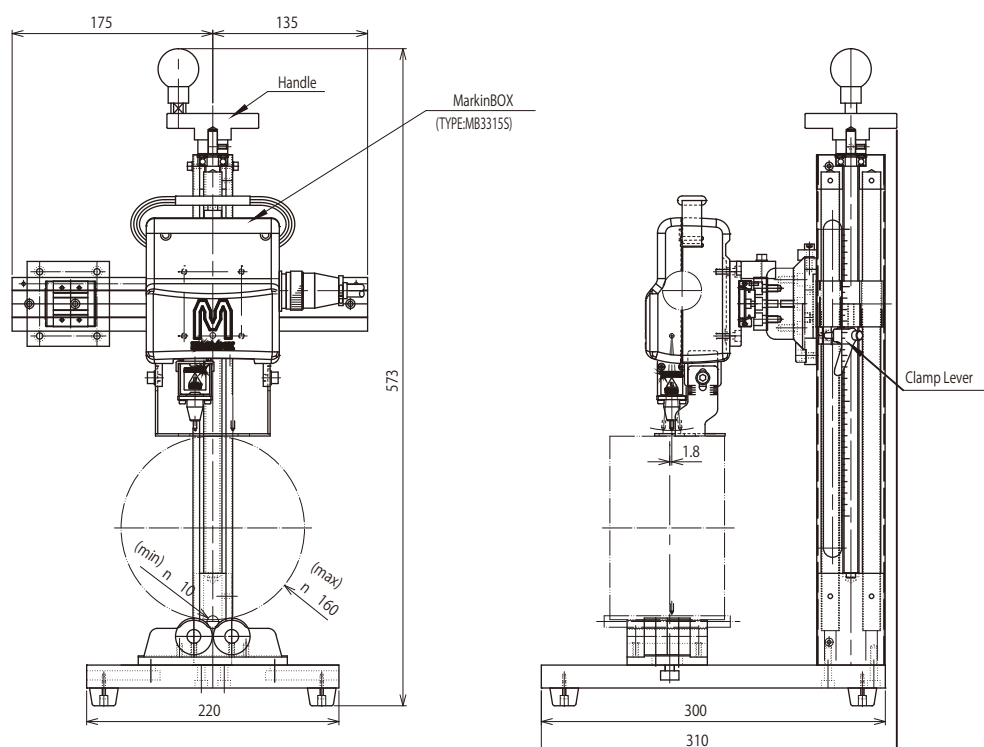


Suit for small-lot production of rotary marking.
Place the round parts then rotate it well done.

MB S-Rotary Specifications

Head model	Workpiece diameter	Continuance digits	Pause time
3315S / 8020S	$\phi 10 \sim \phi 160\text{mm}$ (0.4" ~ 6.2")	1 ~ 5 words	0.5 ~ 5 (sec)

MB S-Rotary Overview

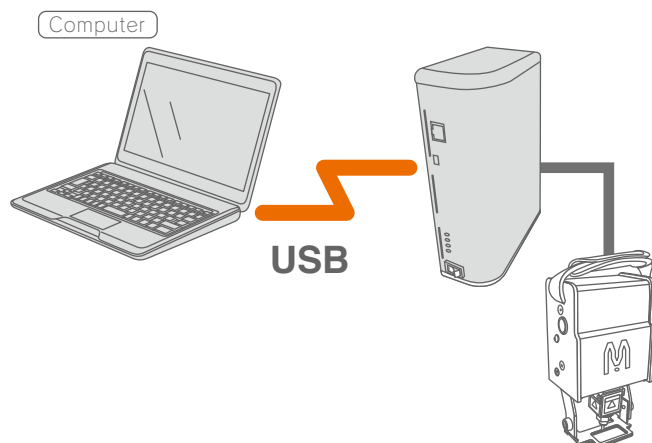


Accessories

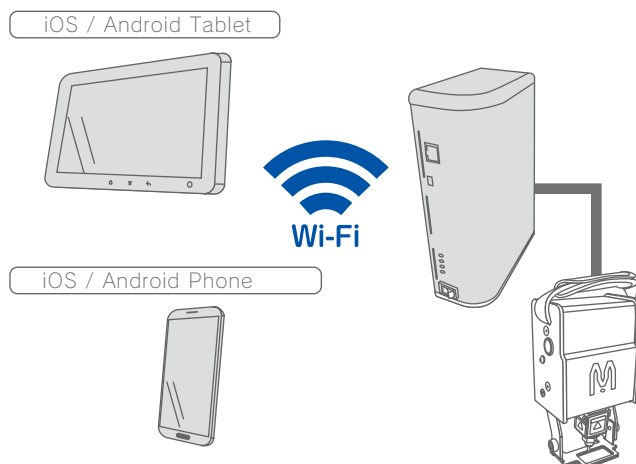


Connectivity

① USB communication

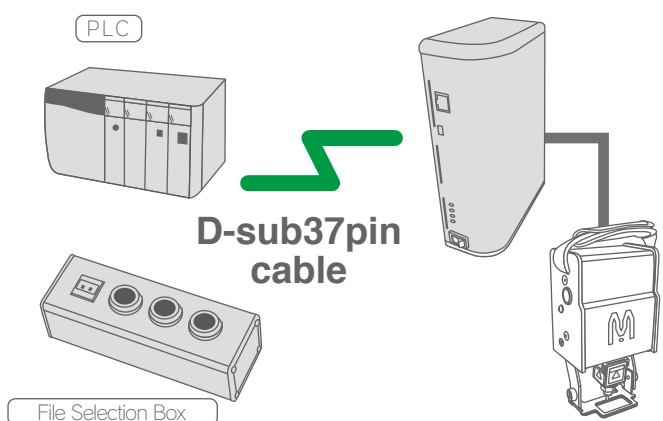


② Hand held device communication



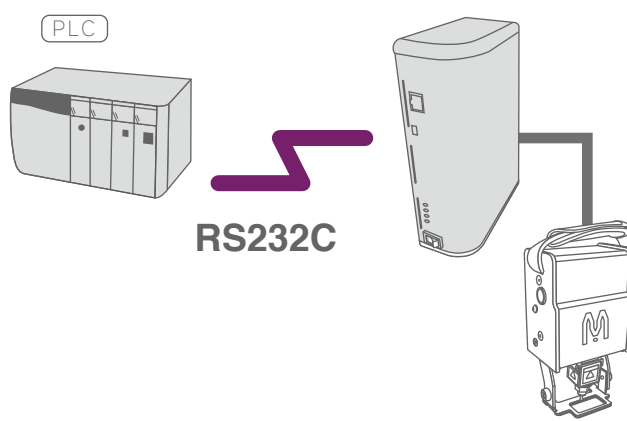
*Apps "sketchbook touch" is necessary for iOS or Android device and is available to download.

③ D.I/O communication



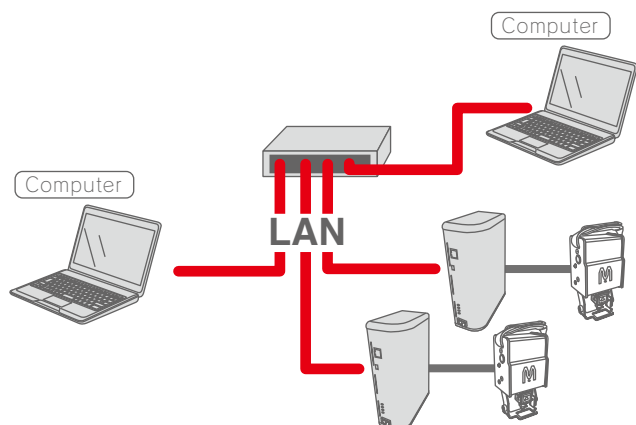
*Files saved in the MB2S controller are selectable for marking.

④ PLC communication

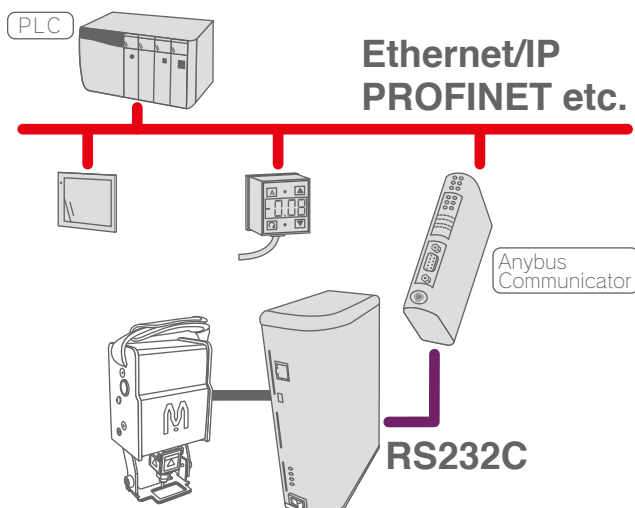


*The special program in PLC is necessary for this communication.

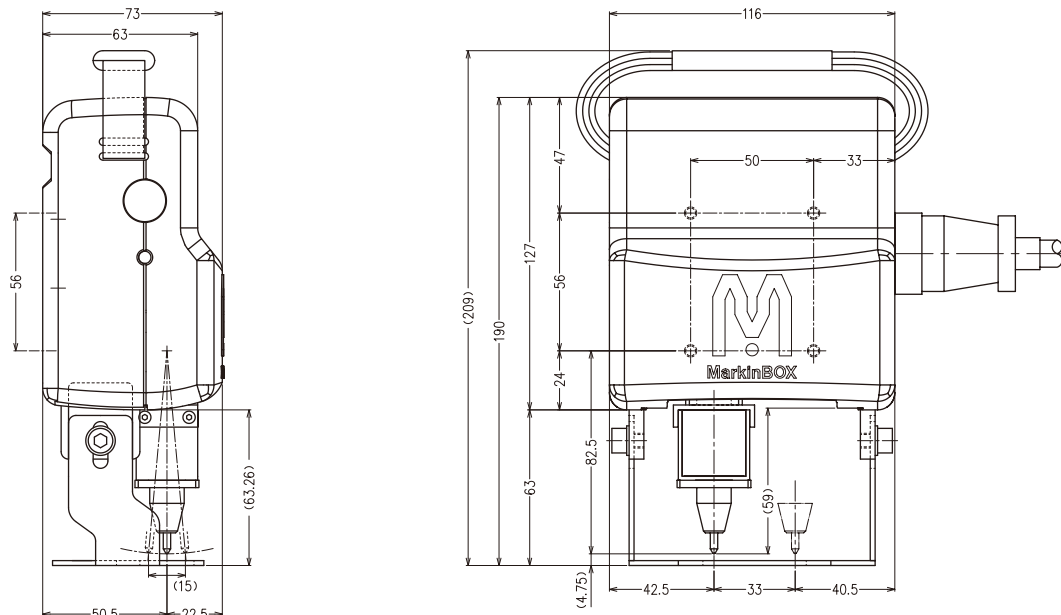
⑤ Network communication



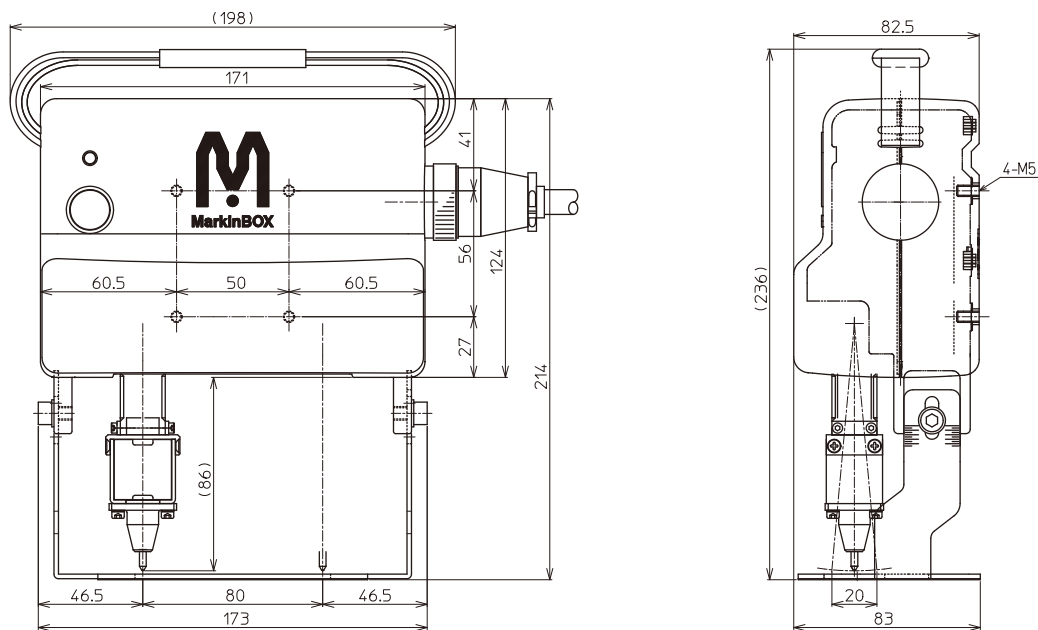
⑥ Fieldbus Communication



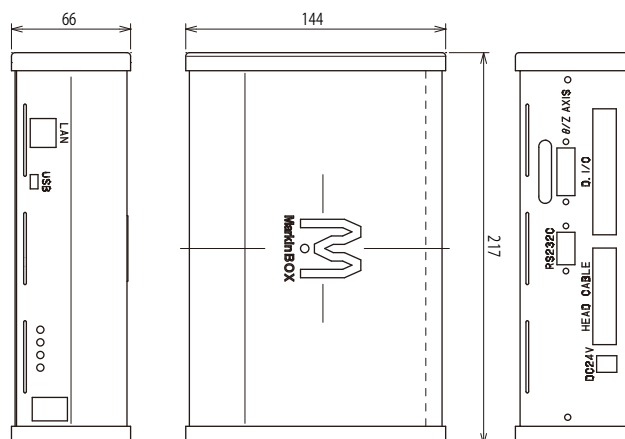
MB 3315S Overview



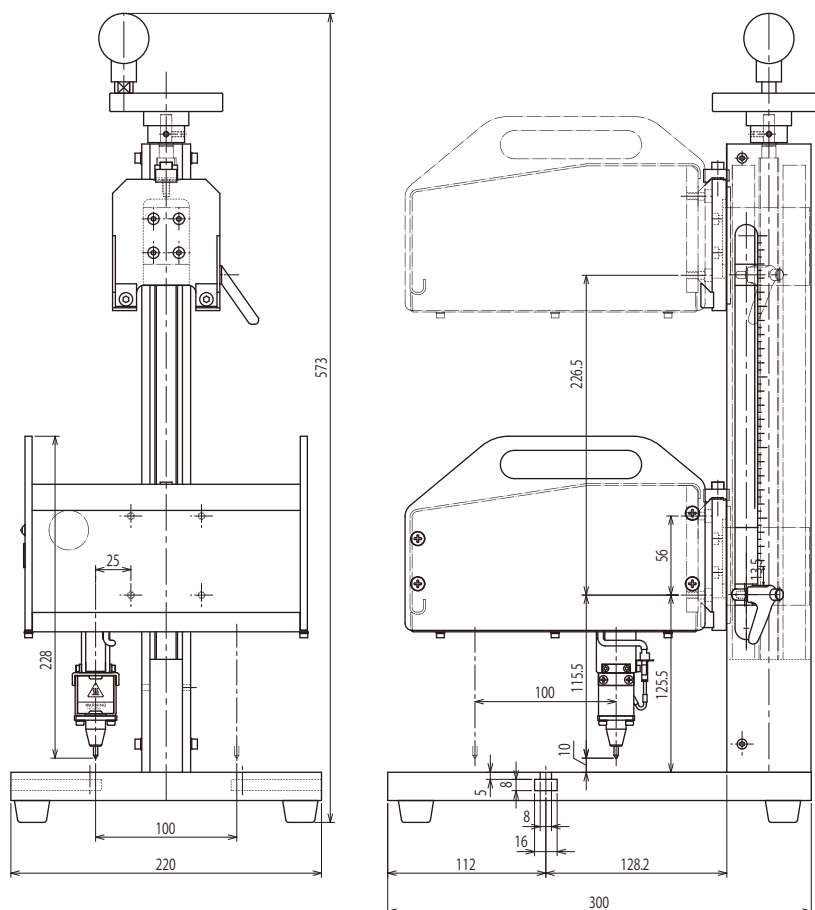
MB 8020S Overview



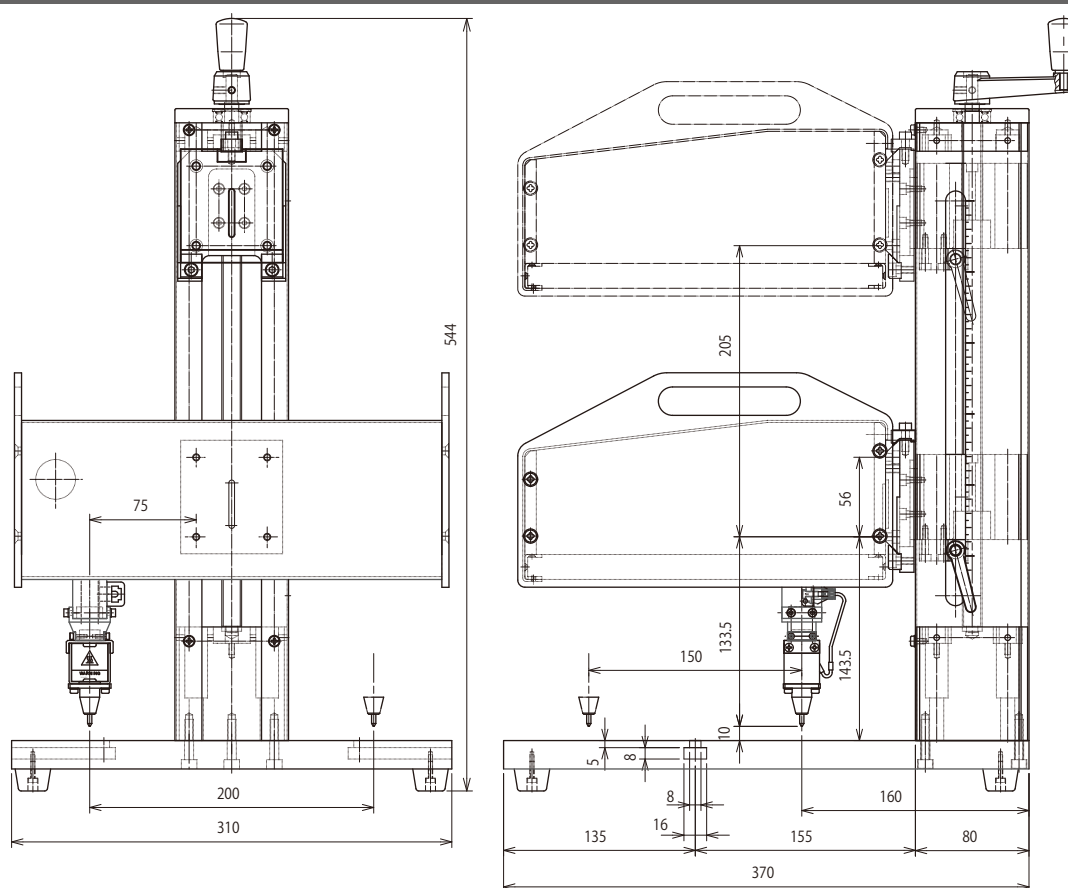
MB2S Controller Overview



MB 1010 Overview



MB 2015 Overview



Specifications

MarkinBOX Specification table

	MB3315S	MB8020S	MB1010	MB2015
Marking area	X axis 33mm (1.3") x Y axis 15mm (0.6")	X axis 80mm (3.1") x Y axis 20mm (0.8")	X axis 100mm (4") x Y axis 100mm (4")	X axis 200mm (8") x Y axis 150mm (6")
Standard cable length	3M (10')	3M (10')	2M (6')	2M (6')
Head dimensions	116mm (4.6") x 73mm (2.9") x 190mm (7.5")	173mm (6.8") x 83mm (3.3") x 214mm (8.4")	200mm (7.9") x 217.5mm (8.6") x 228mm (9")	308mm (12") x 269mm (10.6") x 249mm (9.8")
Head weight	1.5kg (3.3lbs)	2.1kg (4.6lbs)	4.5kg (9.9lbs)	6.3kg (13.9lbs)
Tool and post dimensions	220mm (8.7") x 300mm (11.8") x 573mm (22.6")			310mm (12.2") x 370mm (14.6") x 544mm (21.4")
Tool and post weight	7kg (15.4lbs)			10.7kg (23.6lbs)

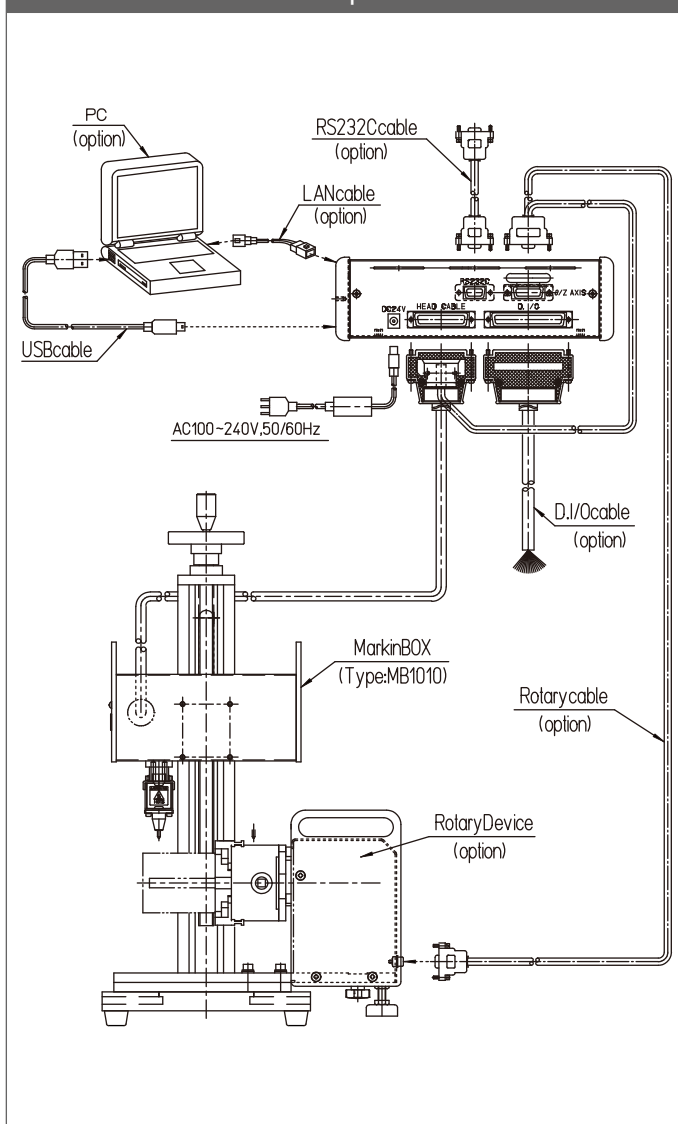
	MB2S Controller
Power	AC100V ~ 240V 50/60Hz
Dimensions	66mm (2.6") x 144mm (5.7") x 217mm (8.5")
Weight	1.4kg (3.1lbs)
Connectivity	USB / RS232C / LAN / WIFI
D.I/O	input 12 pins / output 8 pins Save up to 255 files

sketchbook2 Specification table

OS	Windows 7 or higher
Operating environment	Memory 1 GB or more, monitor resolution 1280 x 768 or higher
Corresponding model	MB3315S, MB8020S, MB1010, MB2015
Settable character height	0.1 mm or larger (0.1 mm pitch) to maximum Y value
Settable character width	Character height x 1% ~ 200%
Horizontal character pitch	0.1mm~
Fonts	[Original MarkinBOX fonts] MB font, Elegant font, 5x7 font * Including alphanumeric characters, hiragana, katakana, miscellaneous symbols [PC fonts] * PC fonts are valid only when a PC is always on
Logos	JPEG, BMP data are read and registered on the creation screen Automatic conversion of DXF data * Straight lines, circles, ellipses, polygons supported
Serial marking	00000001 ~ 99999999
Calendar marking	Year, month, day, hours, minutes, seconds, Julian dates
2D codes	Data matrix, QR code
Number of creation fields	Up to 50 fields
Barcode reader	Automatic marking of data from barcode reader
File communication	Up to 255 files can be sent to the controller
Password functions	Two-level password setting (administrator/user)
Others	Drawing editing functions supported

Note: Specifications can be changed without prior notice for quality improvement.

MB1010 Example connection



<http://www.markinbox.com>

Supplier of MarkinBox to the USA and Canada

MB Metal Technologies LLC

403 S. Hawley Rd., Milwaukee, WI 53214

Toll free 855-897-1439