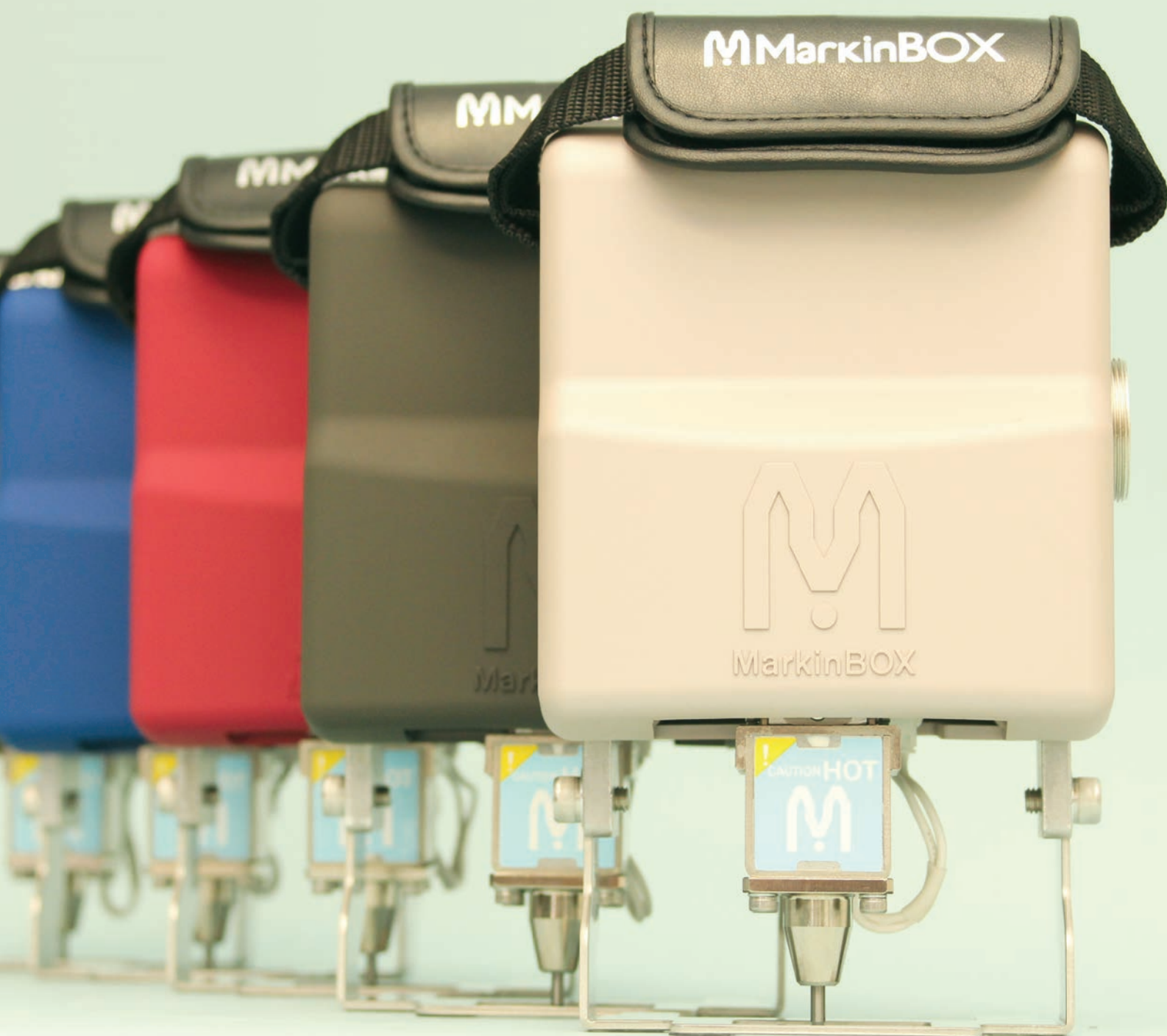




THE MOST PORTABLE MARKER  
simple creative and original



# The Compact Portable Marker MB3315S

\*Actual size



Available in 5 colors.



Red



Silver



Blue

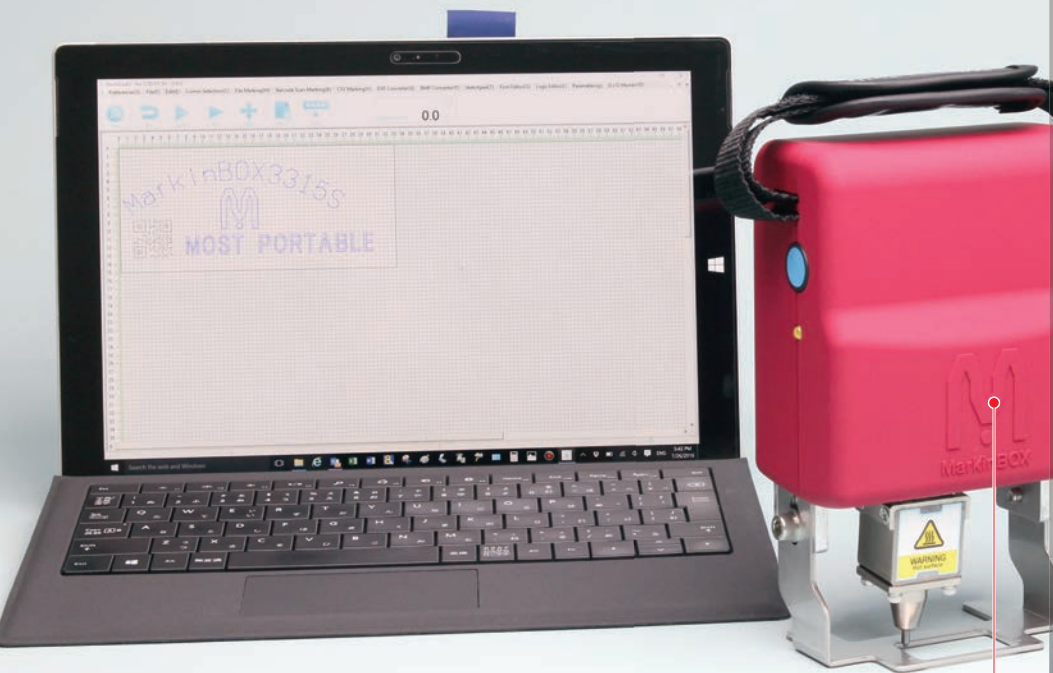


Green



Black





Made of impact-resistant polycarbonate  
finished with a rubber coating.

Portability-focused  
compact marker.

Marking area of  
X axis 33mm × Y axis 15mm.



Easy marking at any place  
due to the lightweight  
1.5 kg (3.3lbs) only.



Shutter to keep  
debris out is  
standard feature.



A metal cover is  
provided as  
an option.

## Workpiece Samples



Hardened steel (HRC60)



Metal casting

# The Mid-Sized Portable Marker MB8020S

\*Actual size

Available in 5 colors



Red



Silver



Blue



Green



Black





Made of impact-resistant polycarbonate finished with a rubber coating.

Mid-sized marker combining portability with a long horizontal marking area.

Marking area of  
X axis 80mm × Y axis 20mm.



Tool and post model (option).



Big Solenoid (BSD) for deeper marking is an option.



A metal cover is provided as an option.

Workpiece Samples



Plated mild steel

Round stainless steel



The Largest Sized  
Portable and Tool  
Post Marker

MB1010

Available in 5 colors



Champagne Gold



Wine Red



Silver



Gun Metal

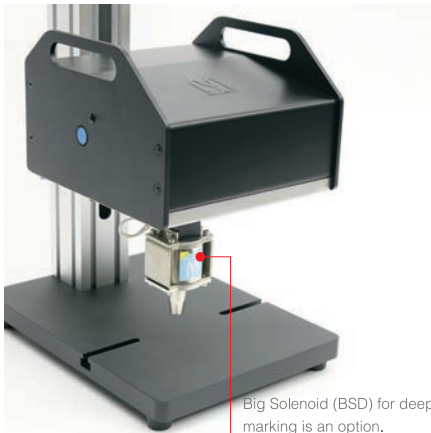


Black



Larger marking area  
more diverse needs.

Marking area of  
X axis 100mm × Y axis 100mm.



Big Solenoid (BSD) for deeper marking is an option.



Shutter to keep debris out is standard feature.



Portable model (option).

## Workpiece Samples

Hardened steel (HRC60)



Metal plates





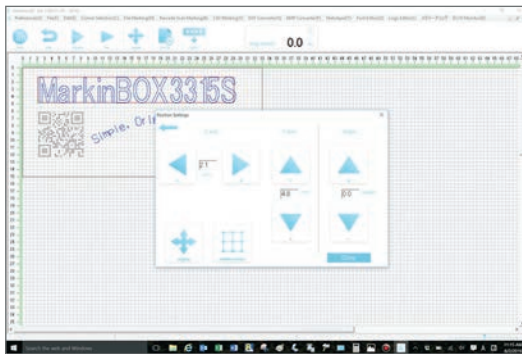
# sketchbook2 Software

Intuitive easy to use  
WYSIWYG operation

One-touch icon-based  
drawing.  
Support for PC fonts.

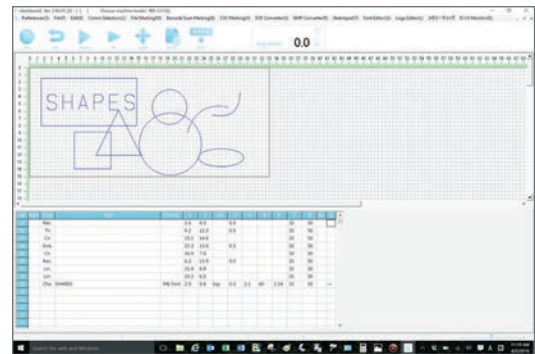
Automatic conversion of  
DXF data.  
No tracing is required.

CSV data can be imported.  
Excel and other csv data  
can be easily marked.

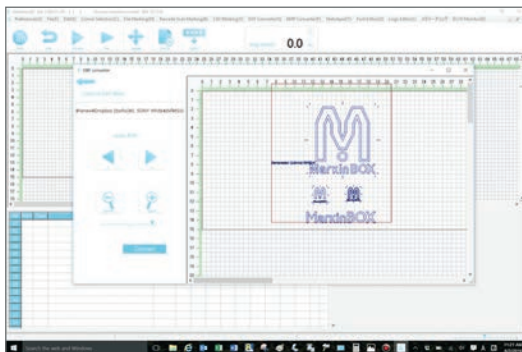


Sense of free drawing on paper and intuitive operation using icons;  
PC fonts also can be marked as they are.

\*PC fonts are supported only when a PC is connected.

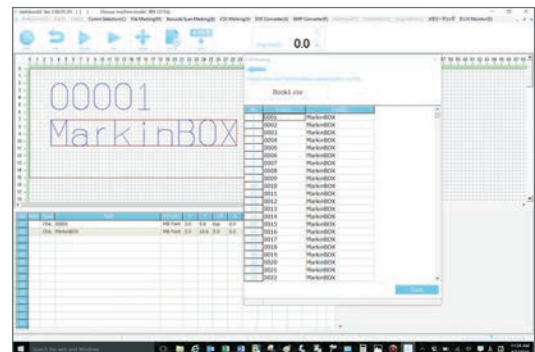


Rectangles, circles, straight lines, ellipses, triangles and other figures can  
be drawn using shape icons; thus simple markings can be easily created  
and marked.



Automatic conversion of DXF data is standard included; input data can be  
automatically converted into MarkinBOX marking data.

\* Straight lines, circles, ellipses and polygons are supported;  
splines and letters are not supported.



CSV marking is included as a standard;  
Excel (CSV format) and other databases can be retrieved with  
one click.



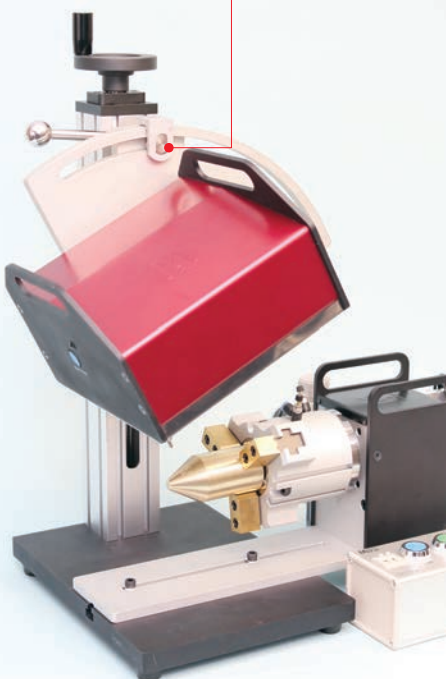
## Accessories

MarkinBOX with  
easy to use  
WIFI communication  
with iOS and Android

ANDROID APP ON  
Google play

Available on the  
App Store

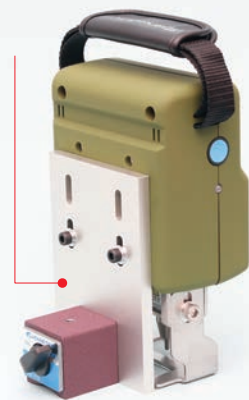
Angle Index.



Markable on the  
angle face.



Hands-free  
magnet fixture.

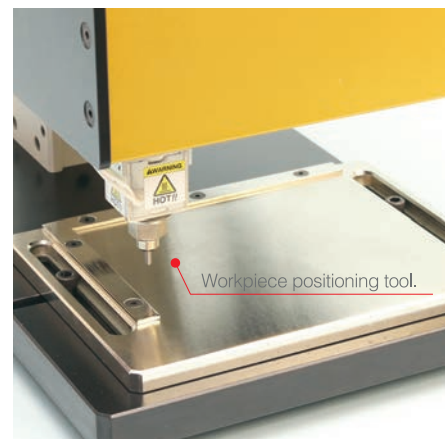


File Selection Box.

Files saved in the  
MB2 controller are  
selectable for marking.



Workpiece positioning tool.

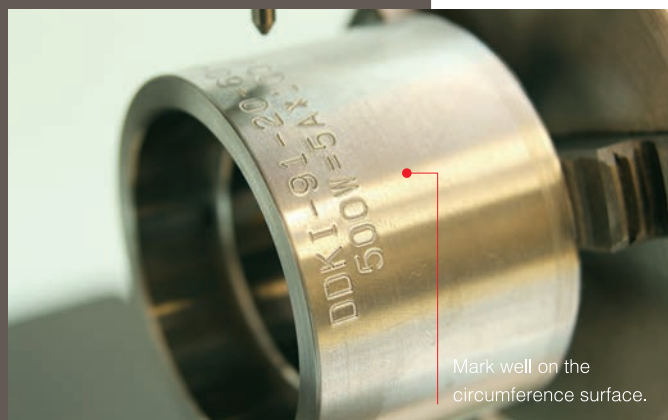


## Rotary Device

A supporter is provided as an option.

Available with  
all MarkinBOX series.

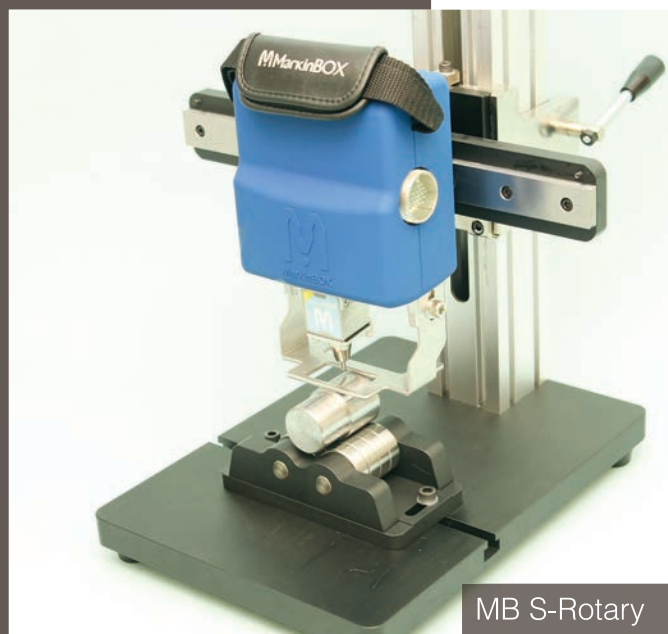
### MB Chuck Rotary



Mark well on the  
circumference surface.

MB Chuck Rotary Specifications

Chuck specification	Chuck type	Grasping method	Work size	Grasp weight
Standard (φ80)	External jaws	Inside diameter grasp (pipe)	φ25~φ70mm ( 1" ~ 2.7" )	3kg (6.5lbs) or less
		Outside diameter grasp	φ10 ~ φ25mm ( 0.4" ~ 0.9" )	
	Internal jaws	Outside diameter grasp	φ22 ~ φ63mm ( 0.9" ~ 2.4" )	
Large (option) (φ100)	External jaws	Inside diameter grasp (pipe)	φ30 ~ φ90mm ( 1.2" ~ 3.5" )	
		Outside diameter grasp	φ10 ~ φ30mm ( 0.4" ~ 1.1" )	
	Internal jaws	Outside diameter grasp	φ30 ~ φ80mm ( 1.2" ~ 3.1" )	
External dimensions / Weight		100(W)×196(D)×218(H) / 4.1kg (9lbs)		



### MB S-Rotary



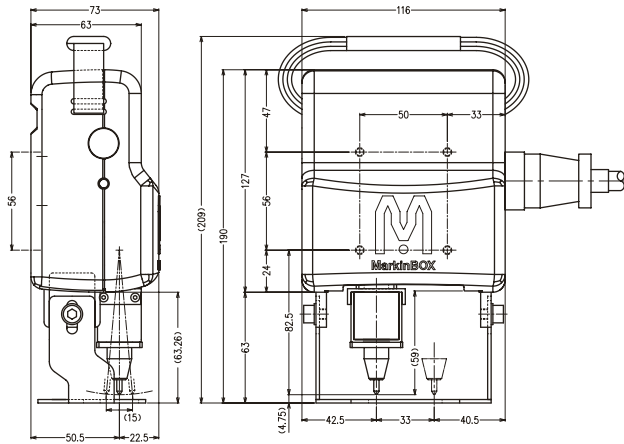
Suit for small-lot production  
of rotary marking.  
Place the round parts  
then rotate it well done.

MB S-Rotary Specifications

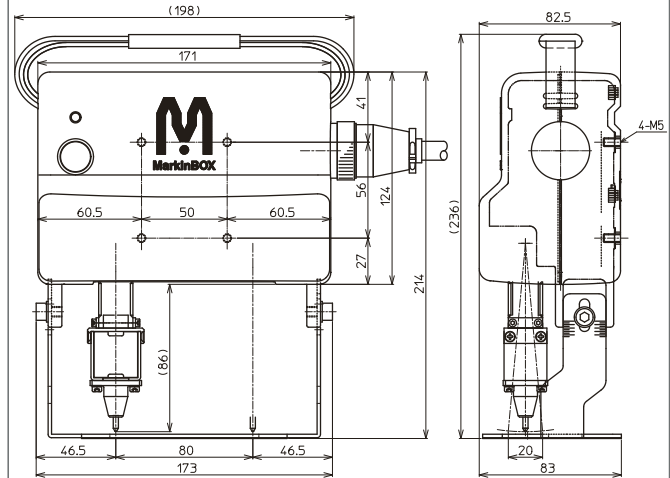
Head model	Workpiece diameter	Continuance digits	Pause time
3315S / 8020S	$\phi 10 \sim \phi 160\text{mm}$ (0.4" ~ 6.2")	1 ~ 5 words	0.5 ~ 5 (sec)



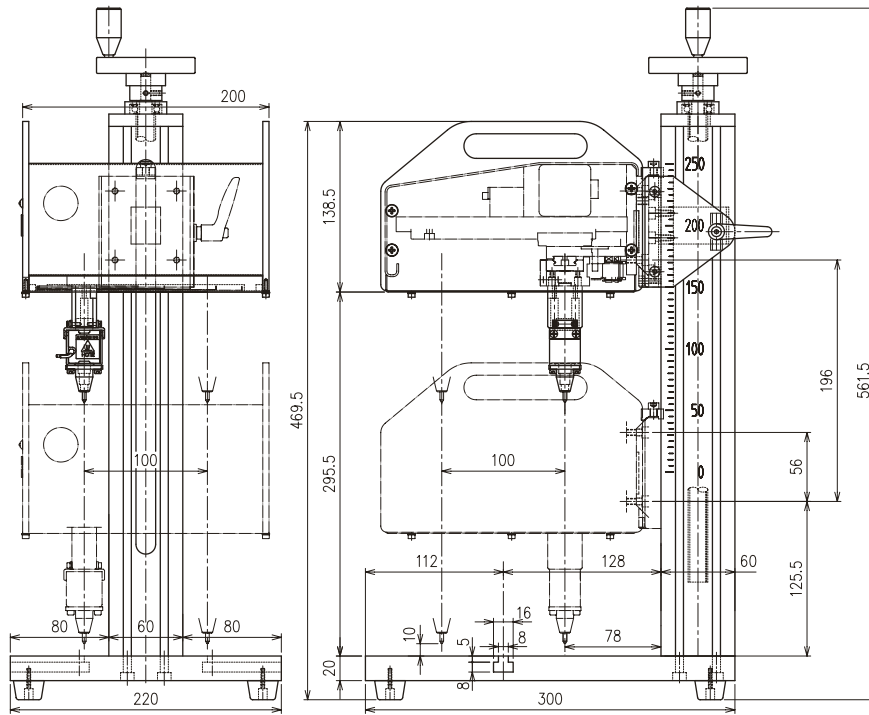
MB 3315S Overview



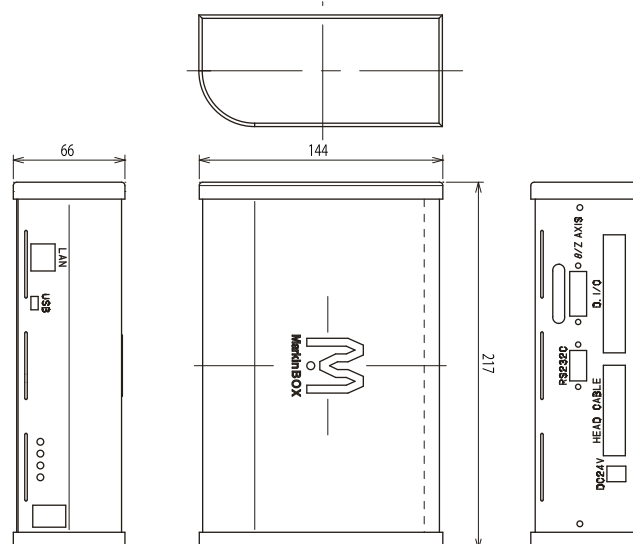
MB 8020S Overview



MB 1010 Overview

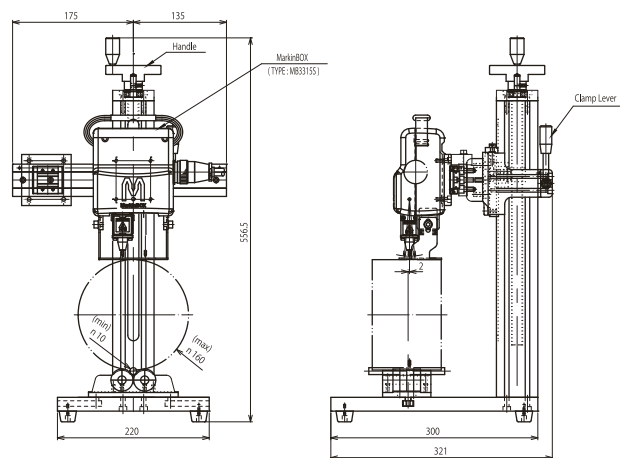


MB2S Controller Overview

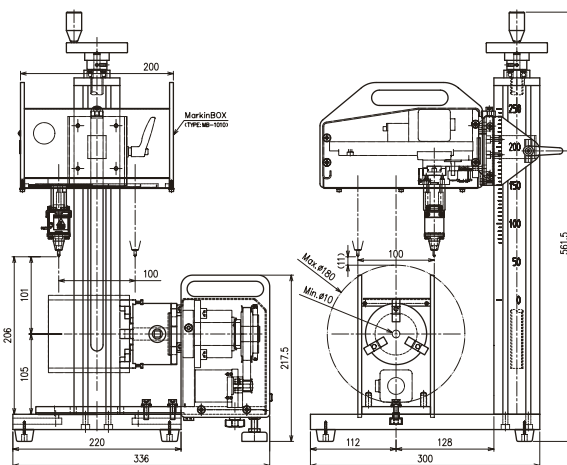


# Specifications

## S-Rotary Overview



## MB Chuck Rotary Overview



## MarkinBOX Specification table

	MB3315S	MB8020S	MB1010
Marking area	X axis 33mm (1.3") x Y axis 15mm (0.6")	X axis 80mm (3.1") x Y axis 20mm (0.8")	X axis 100mm (4") x Y axis 100mm (4")
Standard cable length	3M (10')	3M (10')	2M (6')
Head dimensions	116mm (4.6") x 73mm (2.9") x 190mm (7.5")	173mm (6.8") x 83mm (3.3") x 214mm (8.4")	200mm (7.9") x 217.5mm (8.6") x 228mm (9")
Head weight	1.5kg (3.3lbs)	2.1kg (4.6lbs)	4.5kg (9.9lbs)
Tool and post dimensions	220mm (8.7") x 300mm (11.8") x 561.5mm (22.1")		
Tool and post weight	7kg (15.4lbs)		
MB2S Controller dimensions	66mm (2.6") x 144mm (5.7") x 217mm (8.5")		
MB2S Controller weight	1.4kg (3.1lbs)		

## sketchbook2 Specification table

OS	Windows7, Windows8, Windows10
Operating environment	Memory 1 GB or more, monitor resolution 1280 x 768 or higher
Corresponding model	MB3315S, MB8020S, MB1010
Settable character height	0.1 mm or larger (0.1 mm pitch) to maximum Y value
Settable character width	Character height x 10% ~ 200%
Horizontal character pitch	0.1mm~
Fonts	<p>[Original MarkinBOX fonts] MB font, Elegant font, 5x7 font * Including alphanumeric characters, hiragana, katakana, miscellaneous symbols</p> <p>[PC fonts] * PC fonts are valid only when a PC is always on</p>
Logos	<p>JPEG, BMP data are read and registered on the creation screen</p> <p>Automatic conversion of DFX data</p> <p>* Straight lines, circles, ellipses, polygons supported</p>
Serial marking	00000001 ~ 999999999
Calendar marking	Year, month, day, hours, minutes, seconds, Julian dates
2D codes	Date matrix, QR code
Number of creation fields	Up to 50 fields
Barcode reader	Automatic marking of data from barcode reader
File communication	Up to 255 files can be sent to the controller
Password functions	Two-level password setting (administrator/user)
Others	Drawing editing functions supported

Note: Specifications can be changed without prior notice for quality improvement.

<http://www.markinbox.com>

Supplier of MarkinBOX to the USA and CANADA

E.L. Simeth Co.,Inc.

403 S Hawley Rd., Milwaukee, WI 53214

**Toll Free (855) 897-1439**